

One Long Hot Summer



Bruce and Jean Porter

bdp@ytc1.co.uk

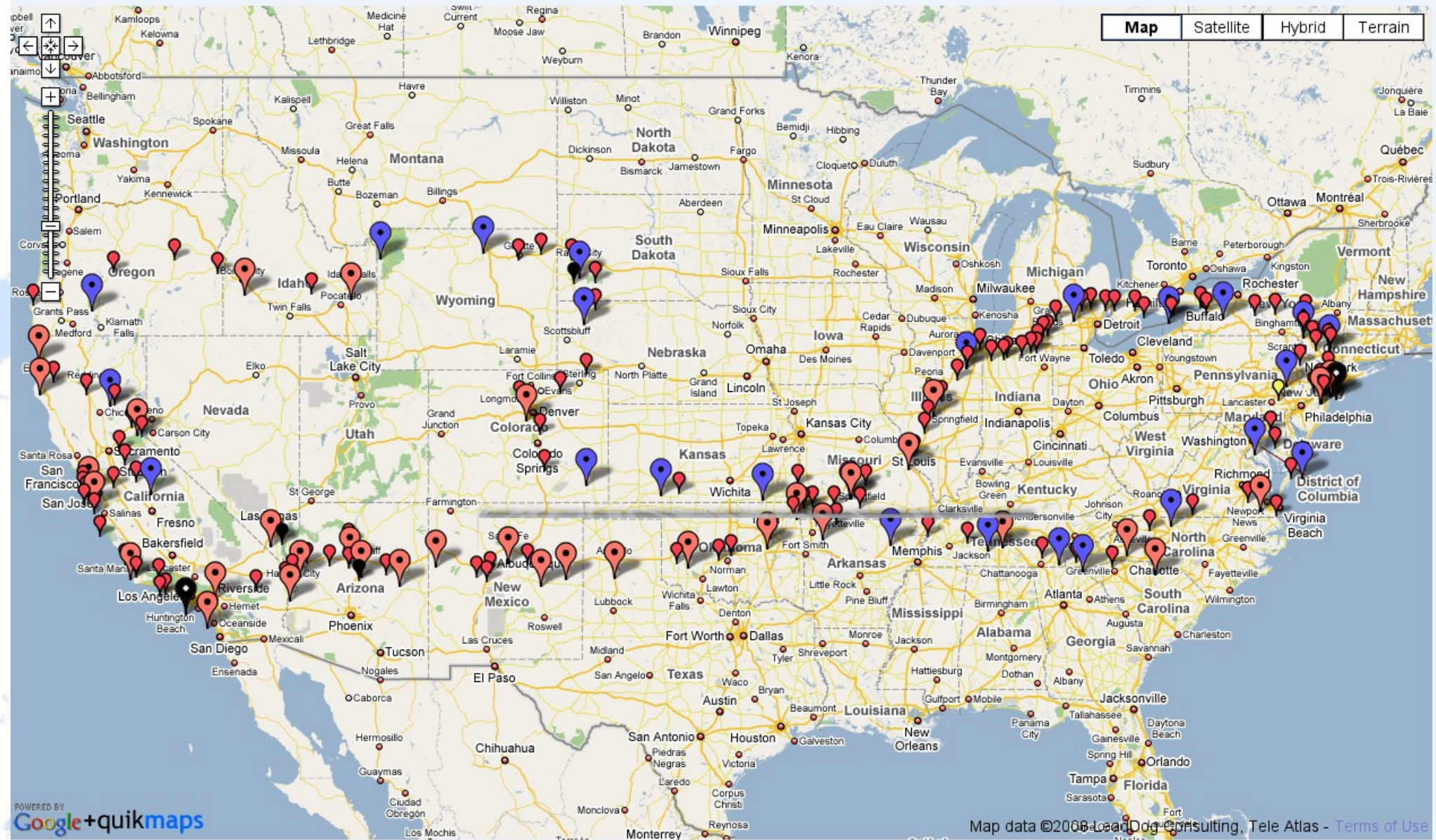
<http://www.ytc1.co.uk>

Living Room Wall



USA 2007

Map Satellite Hybrid Terrain





Packed up – Ready to Roll

Camping

- National Parks
 - \$11 - \$20
 - Park Pass \$80
- State Parks
 - \$18 -> \$30
 - Entrance \$4
- KOA
 - \$40 -> \$70
- Independent
 - \$35

Costs

Motels

- City (per room)
 - \$60 -> \$120
- Large City
 - \$180 (New York)
- Small town
 - \$60 -> \$80
- Sticks
 - \$50 - \$80

Bike Costs People

- Flight £1000
 - One way (agent)
 - Ship - £700
 - One way (agent)
 - Fuel
 - \$2.43-4.50/US Gal
 - Insurance £600
- Flight £540 (for 2)
 - Cheapest not best
 - VISA £50 each
 - Plus day in London
 - Travel Insurance
 - £340 – for 2
 - Daily \$120
 - Target \$100
 - Includes camping gear

Accommodation (Part I)



First Motel





Newest Motel

Just Like Home





Another Room Trashed





Example of Film Sets

Roads







Roads straight, but not wide



SAN JON MOTEL
AMERICAN OWNED - CLEAN ROOMS
REASONABLE RATES - \$19.95 & UP
EXIT 255 - LEFT 10 - LEFT 3 BLOCKS

SP
LI
5





**300 MILES
DESERT AHEAD**

WATT
RICE

A weathered, yellow sign with black text and a faded illustration of a person's face. The sign is mounted on two wooden posts and is surrounded by desert vegetation and rocks. The text on the sign reads "300 MILES DESERT AHEAD" in large, bold, black letters. Below this, the words "WATT" and "RICE" are written in a faded, reddish-brown color. The sign shows signs of age and wear, with some paint chipped away and rust visible.

MONROE'S
GAS-CHARGED
Shocks & Struts
SOLD HERE

A small, rectangular sign for Monroe's Gas-Charged Shocks & Struts. The sign is blue and orange, with the Monroe's logo at the top. The text on the sign reads "MONROE'S", "GAS-CHARGED", "Shocks & Struts", and "SOLD HERE". The sign is mounted on a wooden post and is located in the upper right corner of the image.



4th July



London Bridge



End of Road (Part I)



Accommodation (Part II)



Yosemite (Hot)















Final Camp



Cooking





Cooking / Food / Bears !









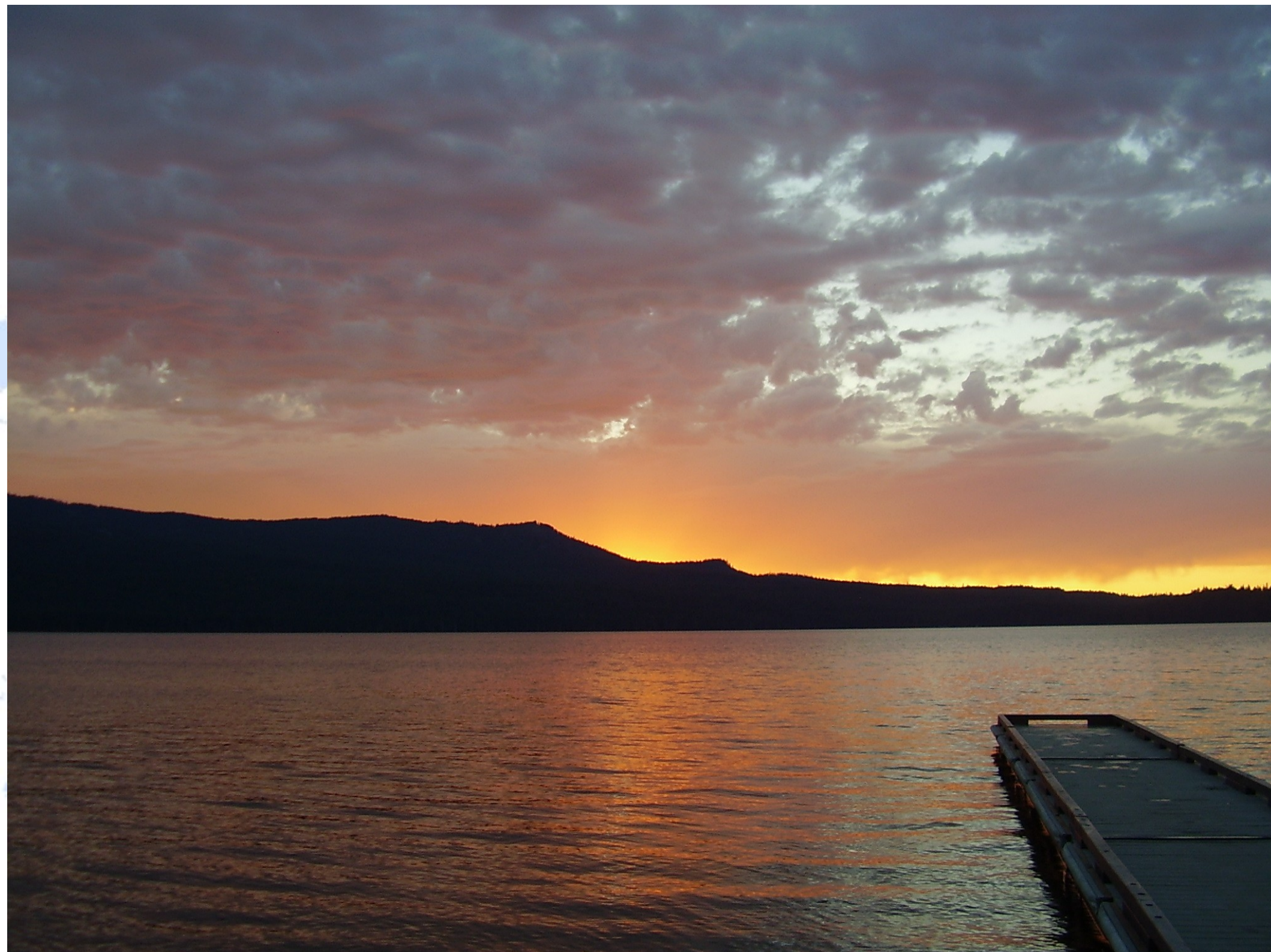
Weather





You can see it coming







Greenberg (Kansas)



End of the Road (Part II)









relocasja

GB

M969
PCK

STAVROS
KONTOUR
ELITE

Where Next ?

A world map with a light blue background. A thin black line starts from the title 'Where Next ?' and branches into three arrows. One arrow points to North America, another to South America, and a third to Australia.

Bruce and Jean Porter

bdp@ytc1.co.uk

<http://www.ytc1.co.uk>